

Daniels

Spectrum

Venue

Visual Guide

SummerWorks Performance Festival

August 1st-11th, 2024 (Updated: July 24th, 2024)

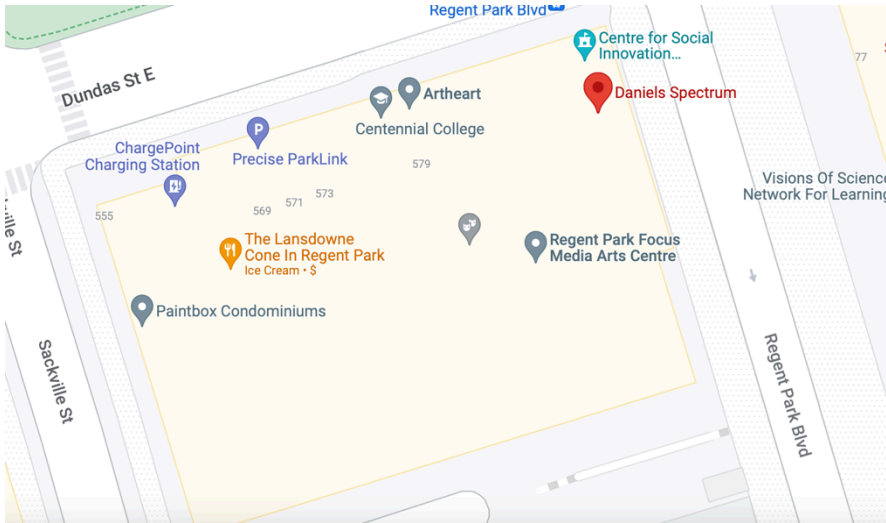


CONTENTS

<u>SECTION</u>	<u>PAGE(S)</u>
DIRECTIONS	3
LOCATION	4
⇒ The Building	4
⇒ Entering the Building	5-6
⇒ The Artscape Lounge	7-8
⇒ Washrooms	9
⇒ Aki Studio	10
⇒ The Elevator	11
⇒ The Courtyard	12
⇒ Quiet Space	13
HEALTH & SAFETY	14
SUMMERWORKS SHOWS	15
CONTACT	16

DIRECTIONS

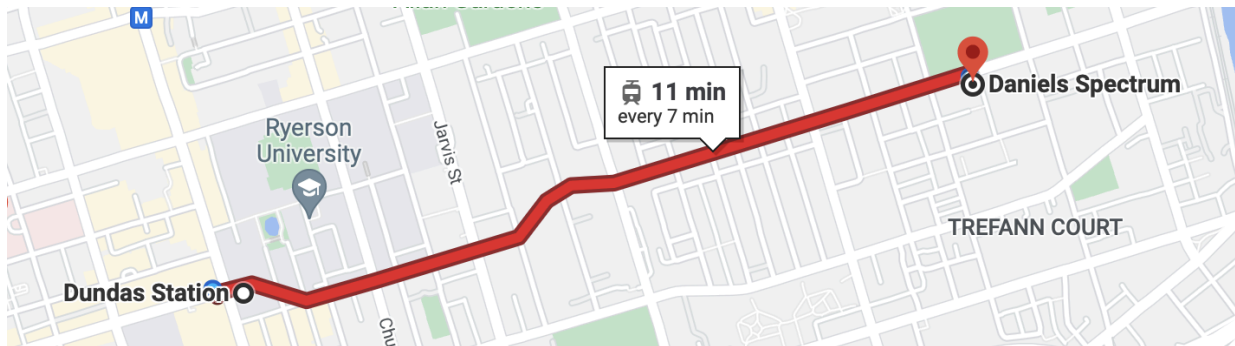
Where is Daniels Spectrum?



Daniels Spectrum is located on the corner of Dundas St East and Regent Park Blvd. The building is right across from Regent Park.

Address: 585 Dundas St E, Toronto, ON M5A 2B7

Getting There



TTC: Dundas Subway Station will take you closest to Daniels Spectrum. Exit the subway station and arrive at the Dundas Street West at Yonge St intersection. Take the 505 streetcar East along Dundas St West to Dundas St East at Regent Park Blvd. From here, walk East for about 1 minute and arrive at Daniels Spectrum on your right.

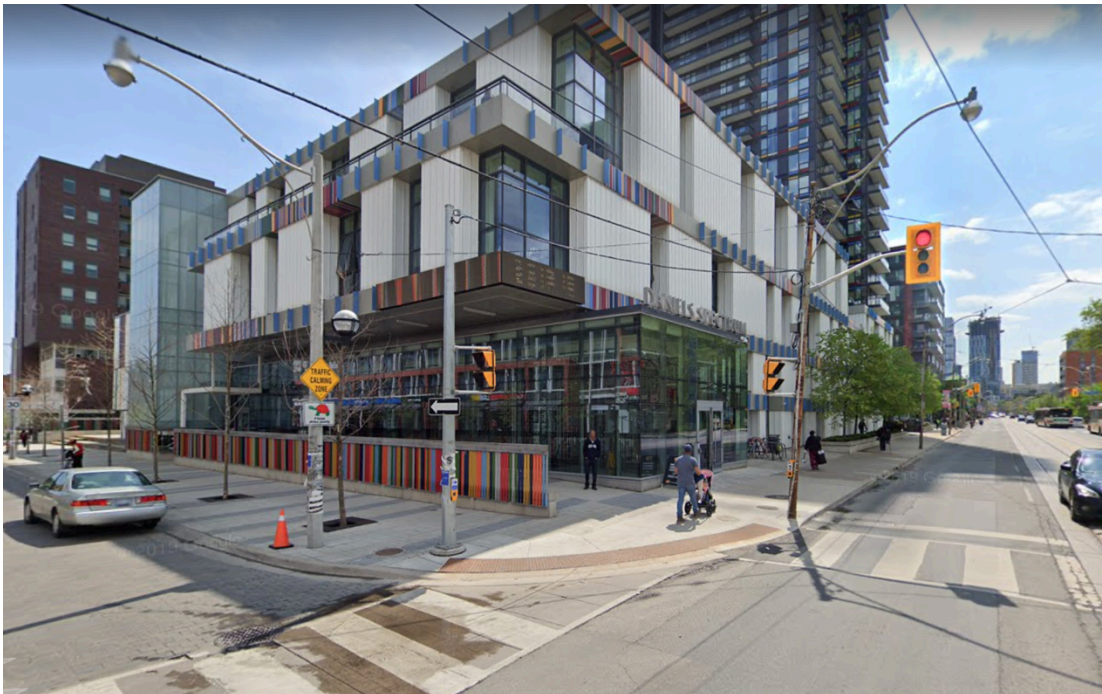
Parking: There is public parking available in a lot located beneath the Daniels Spectrum building. The parking entrance is located at the rear end of the building and can be accessed via Sackville St. There are also select street parking spaces available along Regent Park Blvd.

The Building

This is what Daniels Spectrum looks like from the outside:

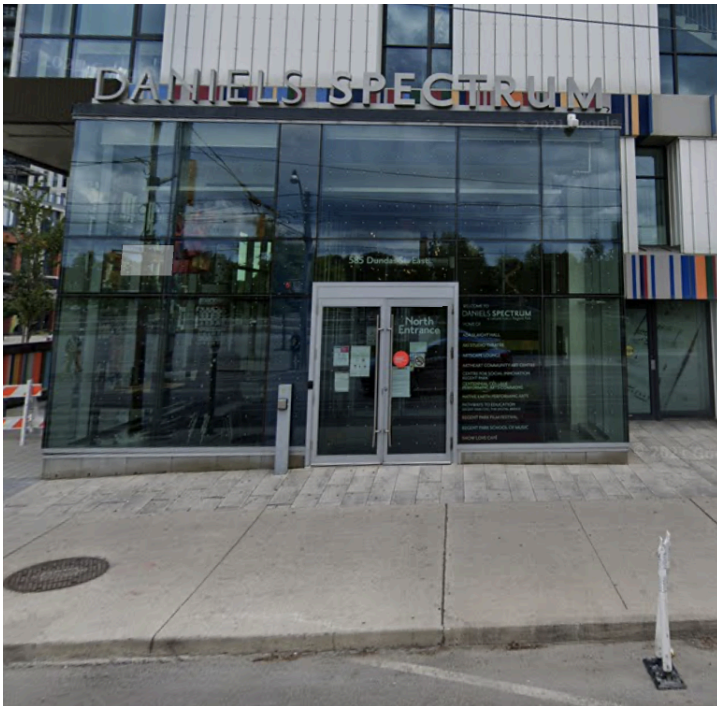


This is the front of the building (the North side) on Dundas Street East



This is the outside view of the building at the Dundas St East & Regent Park Blvd intersection.

Entering the Building



North Entrance: This is the North entrance located on Dundas St East. There are two main glass doors which can be opened either by using the button located on the left, or by pulling them open.



The main doors lead to a small lobby space and a second set of glass doors. There are two buttons located on the left which open the second set of doors and bring you into the Artscape Lounge.



The East Entrance: Alternatively, you can also enter the building from the East entrance located just around the corner from the North Entrance on Regent Park Blvd. There are three steps leading to two main glass doors. These doors can be opened either by using the button located on the right, or by pulling them open.



These doors lead to a second set of glass doors, which will bring you into the main lobby space.

The Artscape Lounge



The Artscape Lounge is located on the first floor of the building and looks like this when it's empty. There are several tables, chairs, and cushioned benches available for seating, as well as two bars located by the glass windows.



There is also a counter at the back where you can buy a drink or a snack from the "Root Burger Restaurant" when it is open.



You can also access the Artscape Lounge from the East entrance. After entering the lobby space, turn right and go straight ahead. (View of the Artscape Lounge from the East-side entrance lobby).

Washrooms (1st Floor)



The washrooms are accessible and can be located just around the corner from the Root Burger Restaurant. To get there from the Artscape Lounge, walk around the left side of the Root Burger Restaurant counter.

Aki Studio



The Aki Studio is the main performance space at Daniels Spectrum for SummerWorks. The doors to the performance space are located directly across from Ada Slaight Hall, on your right (when facing the west side of the building).



This is what the theatre space looks like. The chairs may be set up differently for different projects.

The Elevator



The elevator is in the main lobby, just to the right of the Aki Studio doors.

The Courtyard



The courtyard space is a multi-purpose area used for many different types of performances, projects, and events. It can also be a nice place to get some fresh air. There are some wooden bench seating areas located across from the building.



The courtyard is accessible from the south side of the building and consists of a large open space. To the left (when facing south) the courtyard leads to 3 steps which bring you onto Regent Park Blvd.

Quiet Space

MORE INFO COMING SOON...

****To check-out Daniels Spectrum in advance of your in-person visit, have a look at their 3D tour of the building by clicking [HERE](#) ****

HEALTH & SAFETY

You can review SummerWorks' Health & Safety policy here:

<https://summerworks.ca/health-and-safety-policy>

SUMMERWORKS SHOWS

This year there are four productions being presented at the Aki Studio as part of SummerWorks, including:

- [*Growing Up Regent*](#)
SUMMERWORKS PRESENTATION
- [*C³ \(Camille Cubed\)*](#)
SUMMERWORKS LAB
- [*Beth-Anne*](#)
SUMMERWORKS PRESENTATION
- [*Rougarou*](#)
SUMMERWORKS LAB

Have a Question?

Email us at:

access@summerworks.ca

Visit our Access Page at:

<https://summerworks.ca/accessibility/>